

# CITRINE TO PC WITH ARENA

The Novag Citrine is compatible with ARENA, a Graphical User Interface (GUI) for chess programs by MARTIN BLUME. Please refer to the following website for copyright and licensing prior to usage: <http://www.playwitharena.com/directory/copyright.htm>

1. Go to <http://www.playwitharena.com/>

The screenshot shows the website for Arena 1.99beta5 Chess GUI. The page layout includes a top navigation bar with links like [ WB Leo ], [ Superchessengines ], [ Winboard ], [ Shredder ], [ Ed Schröder ], [ UCI Patrick ], [ Exactchess ], [ GSEI ], [ DGT ], [ Schachwerkstatt ], and [ Jim Ablett ]. A left sidebar contains a navigation menu with items such as Index (1024x768), Bookmark, Features, Copyrights, Helping Persons, Arena Downloads, Arena Mainbook, User Files, Engines, Partners, Engines, Links, News-Ticker 155, Reviews, Interv., Arena Forum, Contact form, and Bugreport form. The main content area is titled 'News-Overview' and includes a 'News-Ticker' for 2008-01-18 and a section for 'User Files, Engines' listing various updates and translations of the engines.ini file by Hans Eriksson and other contributors. A central image displays the Arena GUI interface with a chessboard and engine settings. On the right side, there is a vertical list of supported engines: DGT, NOVAG Citrine, UCI I, II, Chess960, WB I, II, Autoplayer, and ICS. The bottom of the page features a footer with the text: 'Arena is a FREE available Graphical User Interface (GUI) for chess programs (engines) by Martin Blume. Arena runs on Win95, NT4 or higher Microsoft OS versions. Arena is compatible to Winboard protocol, I, II and UCI protocol, I, II. Furthermore, compatible to...'

2. Download the latest software from the ARENA DOWNLOAD site: <http://www.playwitharena.com/directory/download.htm> and follow their instructions.
3. Once downloaded save the copy in an easily accessible place, such as the DESKTOP.

4. Set up your Citrine:

Connect your Citrine to your PC,

plug the chessboard into the mains,

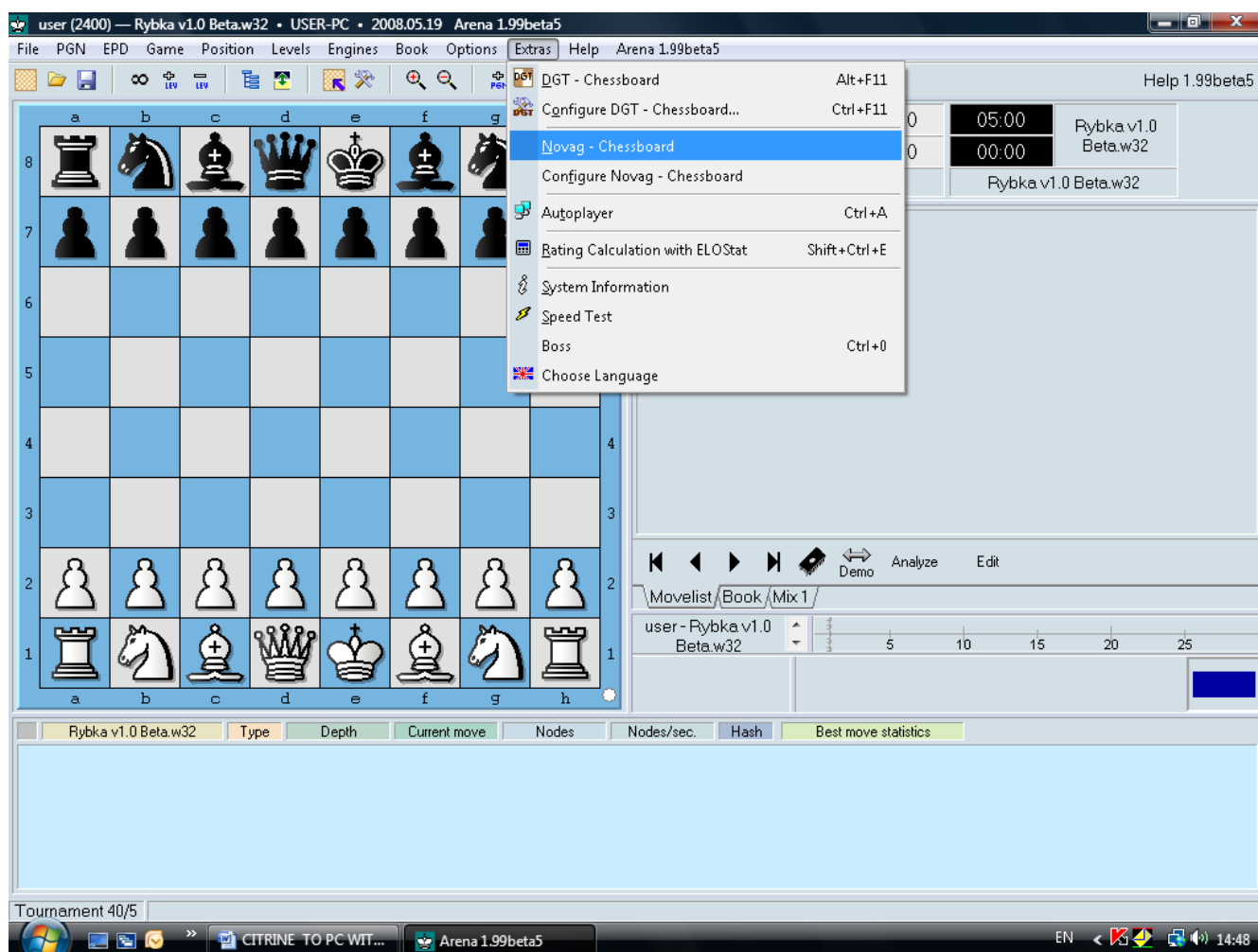
set the chess pieces up and

turn the Citrine ON.

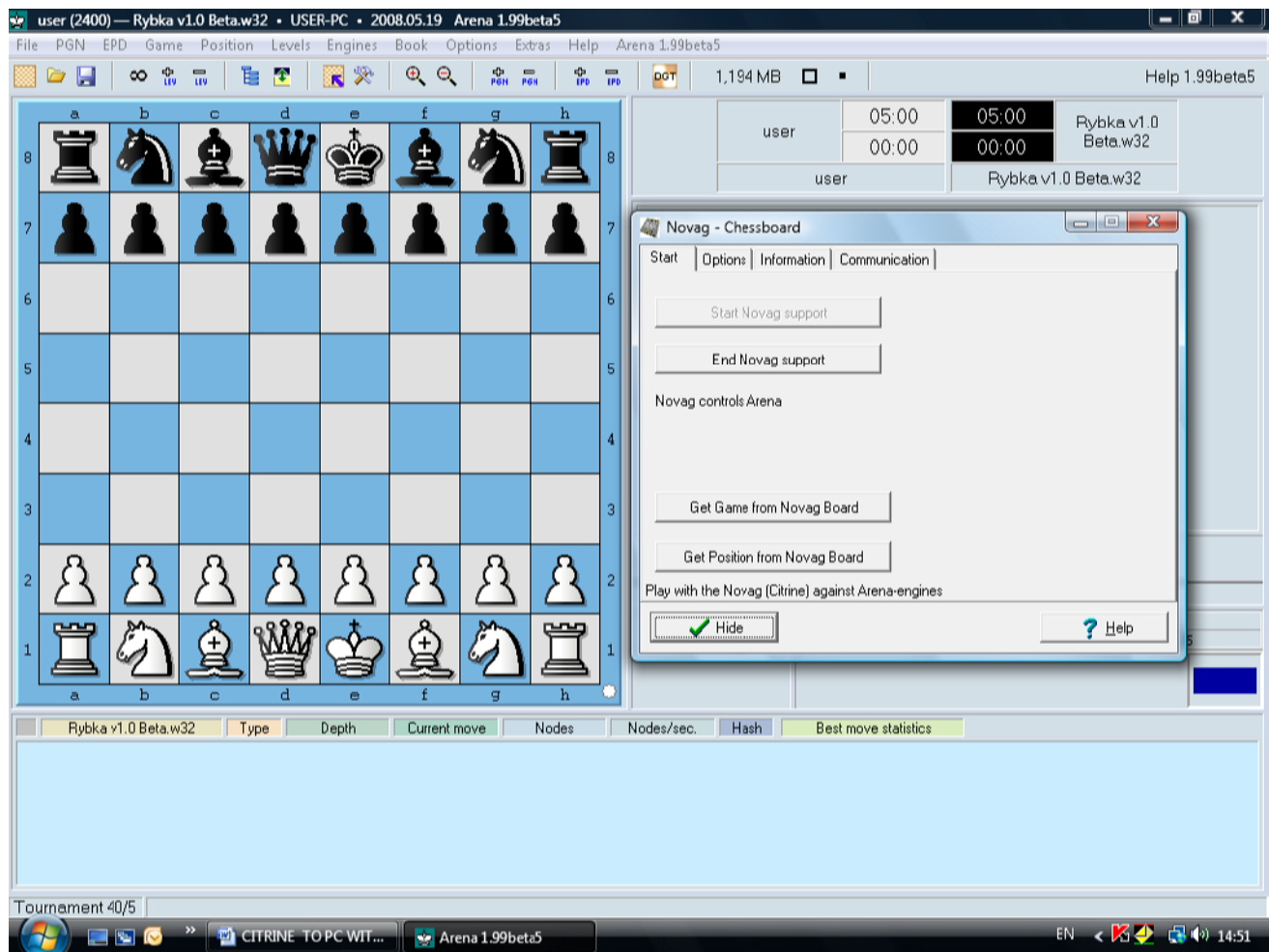
5. Double click the ARENA program to open.

6. Once opened, click EXTRAS

7. Under EXTRAS, click NOVAG-CHESSBOARD



Then the following window will appear:



Click on “Start Novag Support” and wait until the program has registered your Citrine. Once registered you can hide this window.

8. The ARENA software is now ready to display, print and save your game: Each time you make a move (or make a move for the Citrine), that move will be displayed in the ARENA GUI as well as on your chessboard.

## TROUBLE SHOOTING

In the event that moves are not correctly displayed on the board, i.e. the LEDs don't light up and the board does not allow you to make the move, please go to Extras | Configure Novag – Chessboard | Other: **check OFF** Flash move (Send Twice) box.